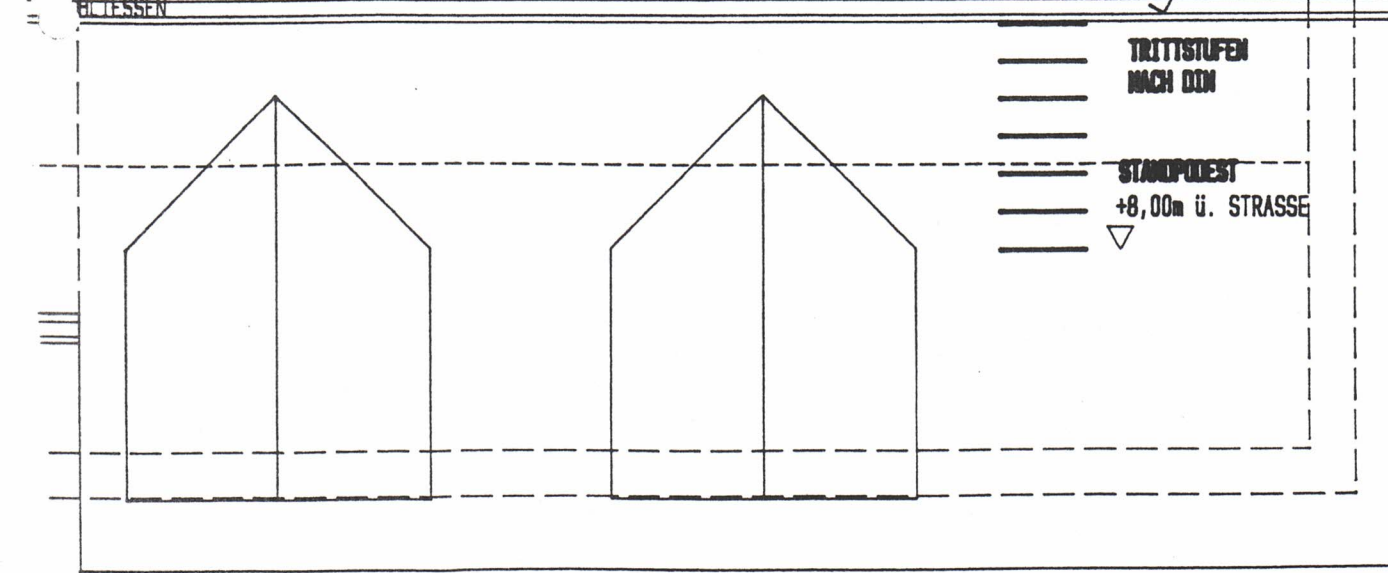
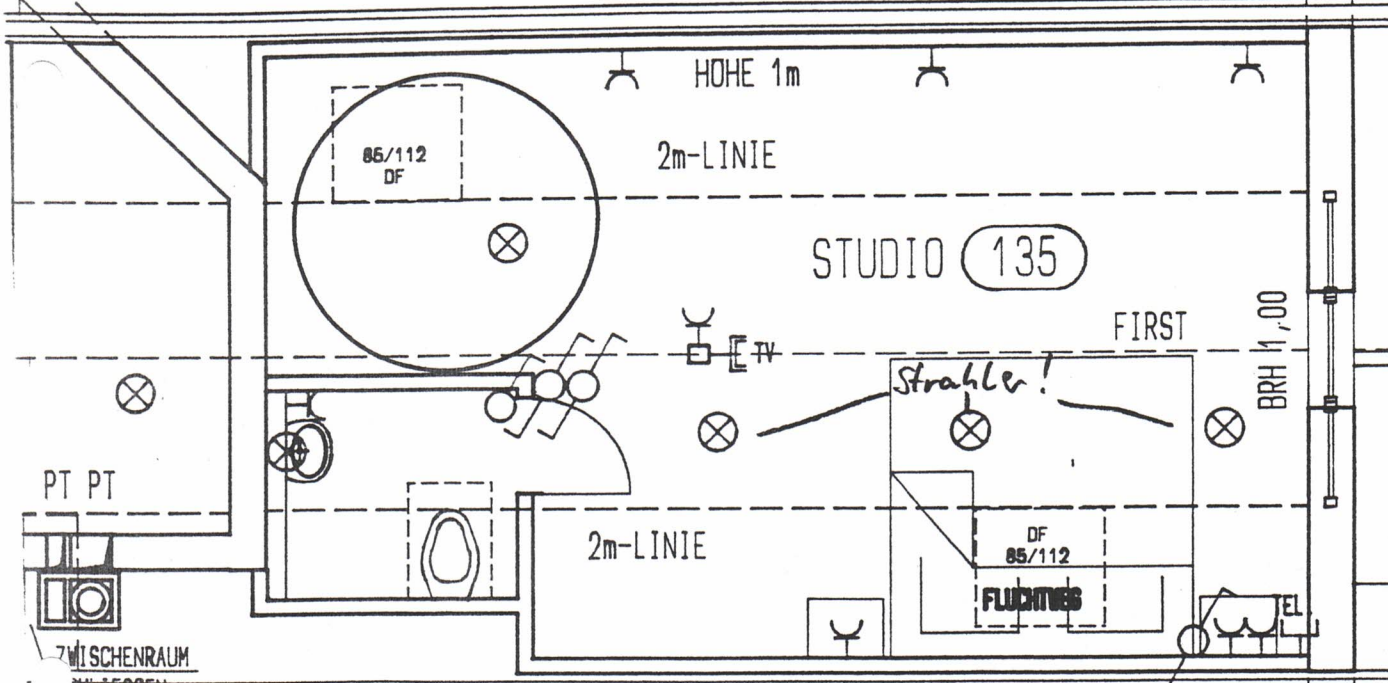
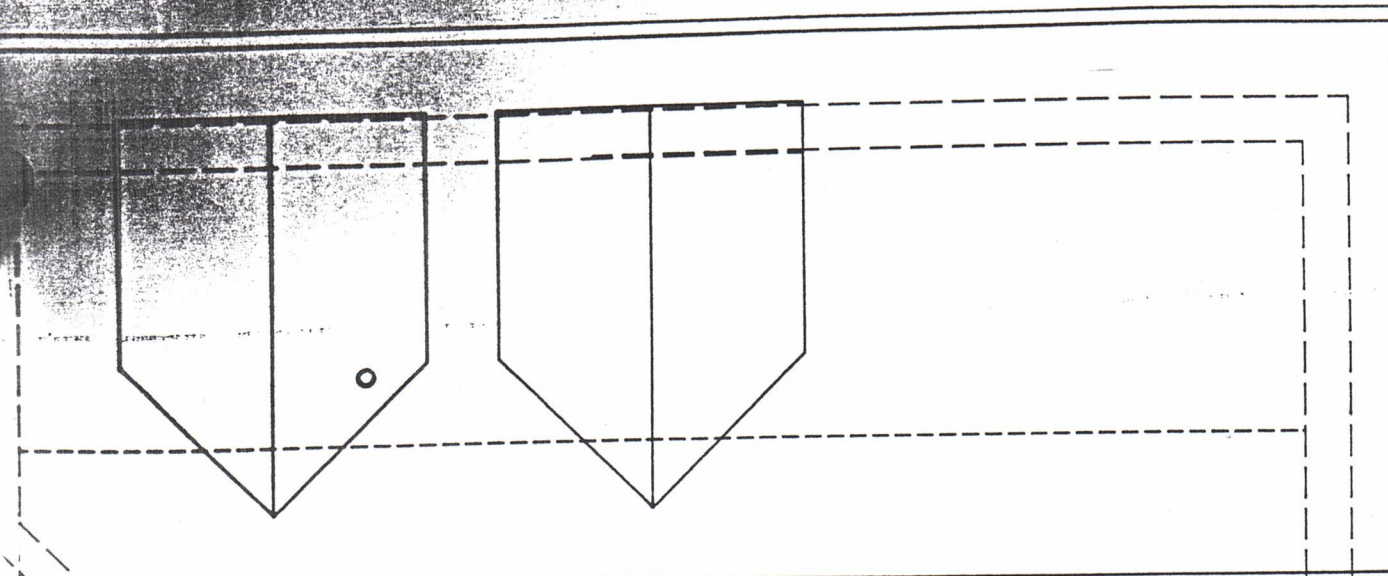


DV ca. 50cm

-- DV ca. 30cm



DV ca. 50cm

TRITTSSTUFEN
NACH ODN

STANDPOLLER
+8,00m ü. STRASSE

PT PT

ZWISCHENRAUM
MIT TISSEN

85/112
DF

HOHE 1m

2m-LINIE

STUDIO 135

FIRST

BRH 1,00

Strahler!

TV

2m-LINIE

DF
85/112

FLUCHTVERBOD

EL